

DePauw University  
Highlights from the Asian Art Collection

# A Brief History of the Asian Art Collection

- In 1991, DePauw received the Arthur E. Klauser '45 Asian and World Community Collection. The gift includes Buddhist art, objects related to Japanese *noh* theater and samurai culture, painted screens, and woodblock prints from the 18th and 19th centuries. Selected objects from this collection are displayed in the Shidzuo Iikubo '23 Gallery.
- Gifts of Tibetan art donated by Bruce Walker '53 complement the Asian collection and include an impressive number of 18th-20th century thangka paintings as well as religious and ceremonial objects. Selected objects from this collection are displayed in the Shidzuo Iikubo '23 Gallery.
- Dr. Leland D. Stoddard '40 gifted 120 Japanese modern prints to the university in 2000. And as recently as 2016, David T. Prosser gave the university an additional 20+ postwar Japanese modern/contemporary works, making the collection one of the largest at a Midwestern academic museum.

# Contact Us

To schedule a research visit or to learn more about the university art collection, please contact:

Craig Hadley, Director/Curator

Peeler Art Center, room 202

[craighadley@depauw.edu](mailto:craighadley@depauw.edu)

Christie Anderson, Registrar

Peeler Art Center, room 003

[cyanderson@depauw.edu](mailto:cyanderson@depauw.edu)

DePauw University  
Asian Art Collection: Japan



*Map of Japan / 18<sup>th</sup> c.*

By: Englebert Kaempfer (Dutch)

Engraving on paper

1991.11.229

Gift of Arthur E. Klauser '45





Clockwise from top: Katana with sheath (1999.2.1), Iron Tsuba / Swordguard (1991.11.131), Wakizashi with sheath (1999.2.2); Gifts of Arthur E. Klauser '45



Tanegashima Flintlock / 17<sup>th</sup> c.  
Japanese copy of Portuguese firearm  
Wood, brass, iron  
1991.11.135  
Gift of Arthur E. Klauser '45







Ashikaga-era Samurai Armor / 14<sup>th</sup>-15<sup>th</sup> c.  
1991.11.159  
Gift of Arthur E. Klauser '45



Womb Mandala / 15<sup>th</sup> c.  
Painting on silk  
1991.11.141  
Gift of Arthur E. Klauser '45





Butsudan/ 16<sup>th</sup> c.  
Lacquered wood  
1885.1.1  
Gift of OGATA Sennosuke,  
class of 1905



Amida Buddha/ 18<sup>th</sup> – 19<sup>th</sup> c.  
Lacquered wood  
1991.11.148  
Gift of Arthur E. Klauser '45



*Buddha with Flower/* 1960  
By: KAWANO Kaoru  
Woodblock print on paper  
2000.7.24  
Gift of Leland Stoddard '40

Prince Shotoku / 17<sup>th</sup> c.  
Wood  
1990.18.1  
Gift of Arthur E. Klauser '45





Nō performance mask / 19<sup>th</sup> c.  
Carved wood  
1991.11.24  
Gift of Arthur E. Klauser '45



Nō performance mask / 19<sup>th</sup> c.  
Carved wood  
1991.11.37  
Gift of Arthur E. Klauser '45



Tea bowl / ca. 1945  
Stoneware  
1991.11.48  
Gift of Arthur E. Klauser '45



Figure with spinning face / mid-18<sup>th</sup> c.

Carved ivory

1991.11.71

Gift of Arthur E. Klauser '45



Rakuchū Rakugai screen/ mid-18<sup>th</sup> c.  
Painting on paper  
1990.18.4  
Gift of Arthur E. Klauser '45



*Hotei at Dusk*, from the series  
*The Seven Gods of Fortune* / 1830s  
By: UTAGAWA Sadatora  
Woodblock print on paper  
2000.7.100  
Gift of Dr. Leland D. Stoddard '40





*Ryogoku Bridge*, from the series *Noted Views of Edo* / 1860s

Woodblock print on paper

1977.1.3

Gift of the Blanche Stillson Estate



*Bijing-e/* 1852

Woodblock print on paper

1998.7.17 - .18

Gift of Dr. Steven G. Conant '71



*Scenes from The Tale of Genji/ 1857*

By: KUNISADA II

Woodblock print on paper

1991.11.227 / 2000.7.104

Gift of Arthur E. Klauser '45 and Dr. Leland D. Stoddard '40

AT RIGHT: *Torii Gate at Seashore - Miyajima*/ 1949  
By: OKUYAMA, Gihachiro  
Woodblock print on paper (shin hanga)  
1991.11.251  
Gift of Arthur E. Klauser '45



AT LEFT: *Kiyomizudera*/ 1941  
From the Series: *Scenes of Sacred Places and  
Historic Landmarks in Japan*  
By: TOKURIKI, Tomikichiro  
Woodblock print on paper (shin hanga)  
1991.11.249  
Gift of Arthur E. Klauser '45



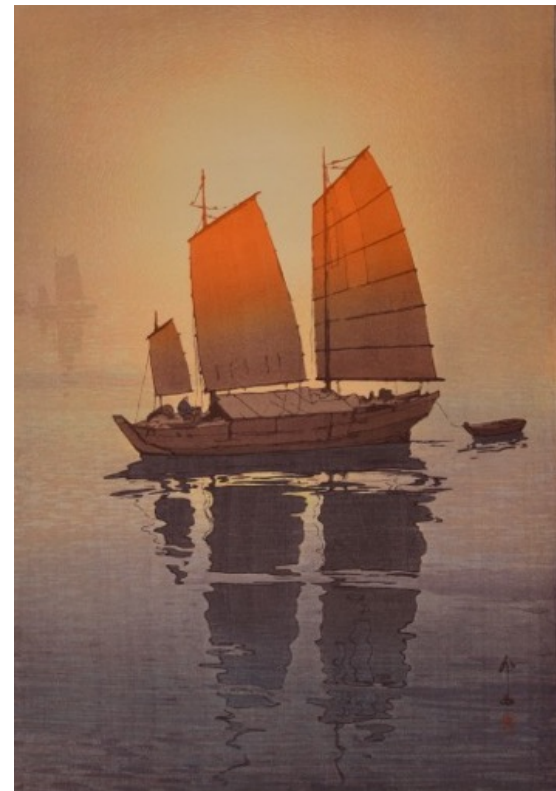
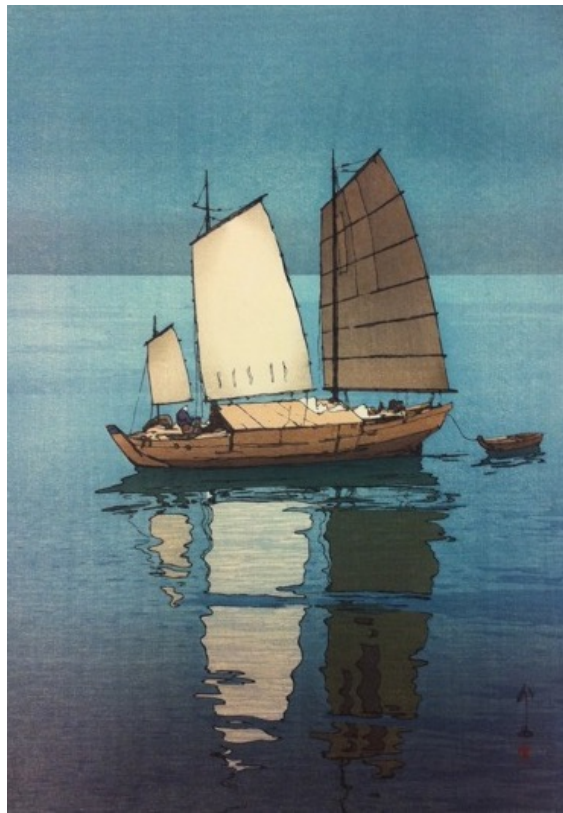
*The Cherry Blossoms of Mt. Shigi / early-mid 20<sup>th</sup> c.  
From the Series: Scenes of Sacred Places and  
Historic Landmarks in Japan*

By: TOKURIKI

Woodblock print on paper (shin hanga)

1998.7.17 - .18

Gift of Dr. Steven G. Conant '71



*Sailing Boats* / 1921

By: YOSHIDA Hiroshi

Woodblock print on paper (shin hanga)

1991.11.172

Gift of Arthur E. Klausner '45



Poem series / mid-20<sup>th</sup> c.

By: MAKI Haku

Woodblock print on paper (sosaku hanga)

Gift of Dr. Leland D. Stoddard '40





*Ancient Song No. 8 / 1965*

By: HAGIWARA Hideo

Woodblock print on paper (sosaku hanga)

2000.7.8

Gift of Dr. Leland D. Stoddard '40



*Make a Wish on the Sky / 2004*

By: UEMURA Narihiro

Carved Indiana Limestone (installed near Olin  
Science Building)

2004.1.1

Gift of the artist



*Atom Struck Tile: The Explosion Center,  
Hiroshima, Shade/Light / 1984*

By: Robert Fitcher

Etching and lithograph on paper

1985.26.3

Gift of Peter J. Klinger



*Hurricane Signal* / 1984

By: Robert Fitcher

Cibachrome print on paper

1985.26.3

Gift of Peter J. Klinger

DePauw University  
Asian Art Collection: China



Shanghai Calendar Advertisements / 1920s  
Lithograph on paper  
DePauw University Purchase



Chinese Cultural Revolution Posters / 1960-1970

Lithograph on paper

DePauw University Purchase

DePauw University  
Asian Art Collection: Tibet





*Shakyamuni Buddha* / 19<sup>th</sup> c.  
Thangka; paint on silk  
2002.4.5  
Gift of Bruce Walker '53



*Yama, the Lord of Death* / 19<sup>th</sup> c.  
Thangka; paint on silk  
2002.4.7  
Gift of Bruce Walker '53



*Drawing of the Eight Sacred Emblems of Buddhism / 1962*

Colored pencils on paper

2002.4.5

Gift of Bruce Walker '53



*Lotus Field Drawing / 1962*

Colored pencils on paper

2004.2.3

Gift of Bruce Walker '53



*Drawing Depicting the Devastation of Tibetan Monasteries / 1962*

Color pencils on paper

2004.2.11

Gift of Bruce Walker '53



*Tibetan Butter Lamp / 19<sup>th</sup>-20<sup>th</sup> c.*  
Silver  
2002.4.22a-b  
Gift of Bruce Walker '53

*Kadampa Stupa* / 13<sup>th</sup> c.  
Bronze, leather, and stone  
2002.4.21  
Gift of Bruce Walker '53





*Phurpa (tantric ritual weapon) / 20<sup>th</sup> c.*

Gilded brass

2002.4.18

Gift of Bruce Walker '53

DePauw University  
Asian Art Collection: India



*Miniature portrait of Mughal ruler Bahadur  
Shah Zafar / mid-19<sup>th</sup> c.*

Paint on ivory with semi-precious stones

1991.11.253

Gift of Arthur E. Klausner '45



*Miniature portrait of Mughal ruler Bahadur  
Shah Zafar / mid-19<sup>th</sup> c.*

Paint on ivory with semi-precious stones

1991.11.255

Gift of Arthur E. Klauser '45





*Mughal Miniature Painting (standing man holding a rose and long sword)/ 18<sup>th</sup> – 19<sup>th</sup> c.  
Paint on ivory with semi-precious stones  
1991.11.256  
Gift of Arthur E. Klauser '45*