

Fish of Big Walnut Creek

August 2012

Prepared by Vanessa Fox



DEPAUW
UNIVERSITY

Est. 1837

1.) Minnow family

- 1a.) Stoneroller
- 1b.) Spotfin shiner
- 1c.) Striped shiner
- 1d.) Emerald shiner
- 1e.) Silverjaw minnow
- 1f.) Blacknose dace
- 1g.) Creek chub
- 1h.) Bluntnose minnow

2.) Sucker family

- 2a.) Quillback carpsucker
- 2b.) White sucker
- 2c.) Northern hogsucker

3.) Sunfish family

- 3a.) Green sunfish

4.) Perch family, Percidae

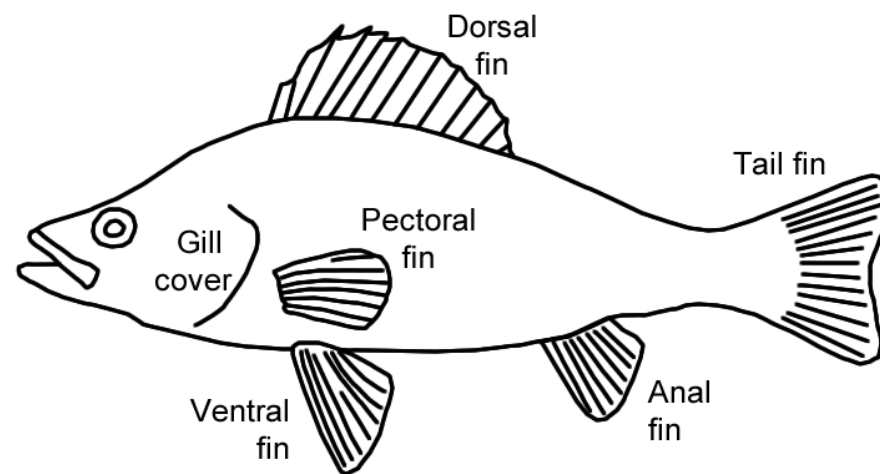
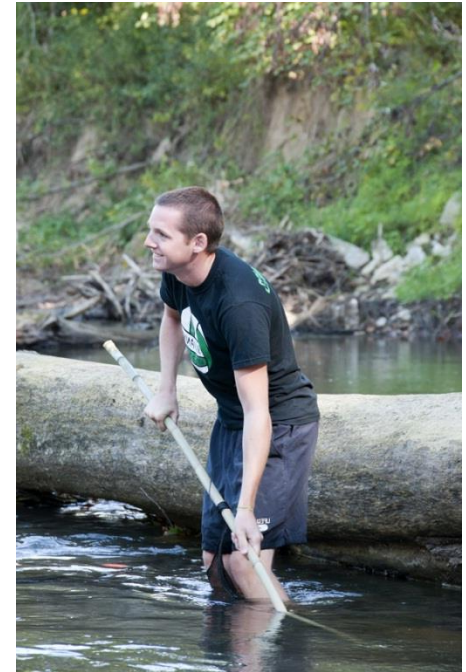
- 4a.) Orangethroat darter
- 4b.) Dusky darter

5.) Catfish family

- 5a.) Brindled madtom

6.) Silversides family

- 6a.) Brook silversides



1.) Minnow family, Cyprinidae

1a.) Stoneroller, *Campostoma anomalum*

Elongated, stocky body

Forked caudal fin

Snout is long, bluntly rounded, overhangs mouth

Small eyes

Short, rounded fins

Male excavates nest by moving gravel with his nose

Adults are 3 to 6 inches long



<http://fish.dnr.cornell.edu/nyfish>

1b.) Spotfin shiner, *Cyprinella spiloptera*

One of the most common species of minnows

Laterally compressed (flat side to side)

Scales are diamond-shaped, arranged in a cross-hatched pattern

Pointed or slightly rounded snout

Edge of dorsal fin is straight

Body is olive-colored on top with silvery sides

Adults are 1½ to 3 inches long



www.dnr.state.oh.us

1c.) Striped shiner, *Luxilus chrysocephalus*

Laterally compressed body (flat side to side)

Large scales

Rounded snout

Body is dark-colored on top with silvery sides and belly

Dark stripes and blotches on side of body

Reddish band on dorsal, anal, and tail fins

Adults are 3 to 4 inches long



<http://fish.dnr.cornell.edu/nyfish>

1d.) Emerald shiner, *Notropis atherinoides*

Laterally compressed body (flat side to side)

Slightly pointed or rounded snout

Posterior edge of anal fin is concave

Back and sides are silvery with an emerald green hue

Greenish emerald horizontal band extends along length of body

Sides are shiny, belly is silvery-white

Fins are transparent or white with no spots or markings

Adults are 2 to 3 inches long



<http://fish.dnr.cornell.edu/nyfish>

1.) Minnow family, Cyprinidae (continued)

1e.) Silverjaw minnow, *Ericymba buccata*

Small silvery minnow

Upper jaw is longer than lower jaw

Underside of head is flat

Eyes are positioned toward top of head

Adults are 3 to 4 inches long



www.dnr.state.oh.us

1f.) Blacknose dace, *Rhinichthys atratulus*

Elongated, stocky body

Forked tail fin

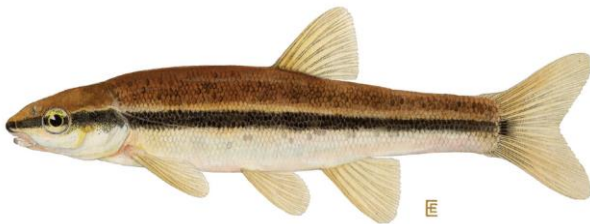
Somewhat long anal fin

Long snout, overhangs mouth

Body is dark, olive-colored, with a dark side stripe

Back is speckled

Adults are 1½ to 3 inches long



<http://fish.dnr.cornell.edu/nyfish>

1g.) Creek chub, *Semotilus atromaculatus*

Chubby, elongated body

Rounded snout, broad head, large mouth

Fins are rounded

Body is olive-colored

Silvery sides and long dark stripe on side of body

Anterior base of dorsal fin has a dark spot

Adults are 3 to 8 inches long

Breeding males have rusty orange-red cheeks, lips, belly, and lower fins, and have many large bumps on top of head



1h.) Bluntnose minnow, *Pimephales notatus*

Rounded head

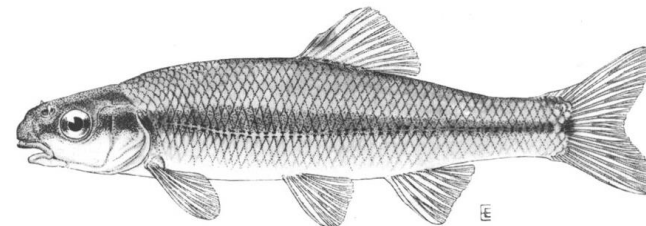
Snout overhangs mouth, hence the name “bluntnose”

Scales have dark edges

Dark lateral line stretches from head to base of tail

Dark spot on first two or three rays of dorsal fin

Adults are 2 inches long



<http://fish.dnr.cornell.edu/nyfish>

2.) Sucker family, Catostomidae

2a.) Quillback carpsucker, *Carpoides cyprinus*

Small mouth

Back is moderately arched

Silvery sides, white belly

Anterior rays of dorsal fin form a long quill

Adults are up to 26 inches long



www.dnr.state.oh.us

2b.) White sucker, *Catostomus commersoni*

Long rounded body

Thick, fleshy lips and sucker-like mouth

Sides and top are dark green, gray, or brown

Edge of dorsal fin is slightly concave or straight

Dorsal fin and tail fin are slate gray

Other fins are white, yellow, or light brown

Tail fin is forked with pointed or rounded tips

Scales are fine

Adults are 7 to 15 inches long



<http://fish.dnr.cornell.edu/nyfish>

2c.) Northern hogsucker, *Hypentelium nigricans*

Elongated body

Head is flattened, slightly concave

Mouth is large, sucker-shaped

Eyes are positioned near top of head

Body is mottled with four dark bars

Adults are 5 to 12 inches long



<http://fish.dnr.cornell.edu/nyfish>

3.) Sunfish family, Centrarchidae

3a.) Green sunfish, *Lepomis cyanellus*

Deep, laterally compressed body

Dark spot on gill cover

Very large mouth

Upper jaw extends back to middle of eye

Dark spots on posterior end of dorsal fin and at base of anal fin

Tail fin has rounded lobes

Pectoral fins are short, rounded

Adults are 3 to 7 inches long



www.dnr.state.oh.us

4.) Perch family, Percidae

4a.) Orangethroat darter, *Etheostoma spectabile*

Female and non-breeding male are olive-colored with tinges of blue and purple.

Breeding male has bright orange throat, bright orange-red and bluish-green bars on side of body and bright bluish-green anal fin.

Front half of body has blotchy horizontal bars

Rear half of body has distinct vertical bars

Tear drop marking under eye



www.americanfishes.com

4b.) Dusky darter, *Percina sciera*

Elongated body

Two dorsal fins, almost connected

Usually three spots at base of tail fin

Tail fin is somewhat forked

Dark, rounded blotches along side of body in a line

Adults are 2 to 4 inches long



5.) Catfish family, Ictaluridae

5a.) Brindled madtom, *Noturus miurus*

Large flattened head with barbels (whiskers) and spines

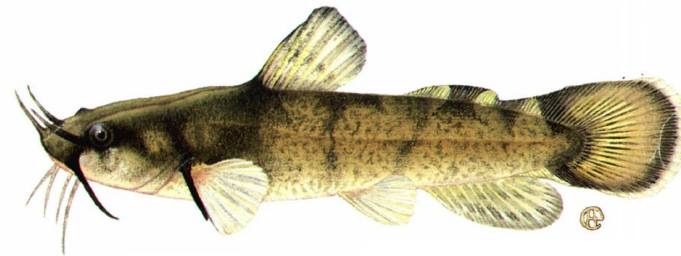
Rounded tail

No scales

Spines are mildly poisonous

Body is light brown with blotches on back, speckled sides, and white belly

Adipose fin has a dark saddle



<http://fish.dnr.cornell.edu/nyfish>

6.) Silversides family, Atherinidae

6a.) Brook silversides, *Labidesthes sicculus*

Elongated, laterally compressed body

Unique beak-like jaw

Head is long, flattened

Silver stripe on side of body

Body is translucent, may be olive green

Anal fin is extremely long

Dorsal fin and second anal fin are concave

Tail fin is forked

Adults are 2 to 4 inches long



<http://fish.dnr.cornell.edu/nyfish>