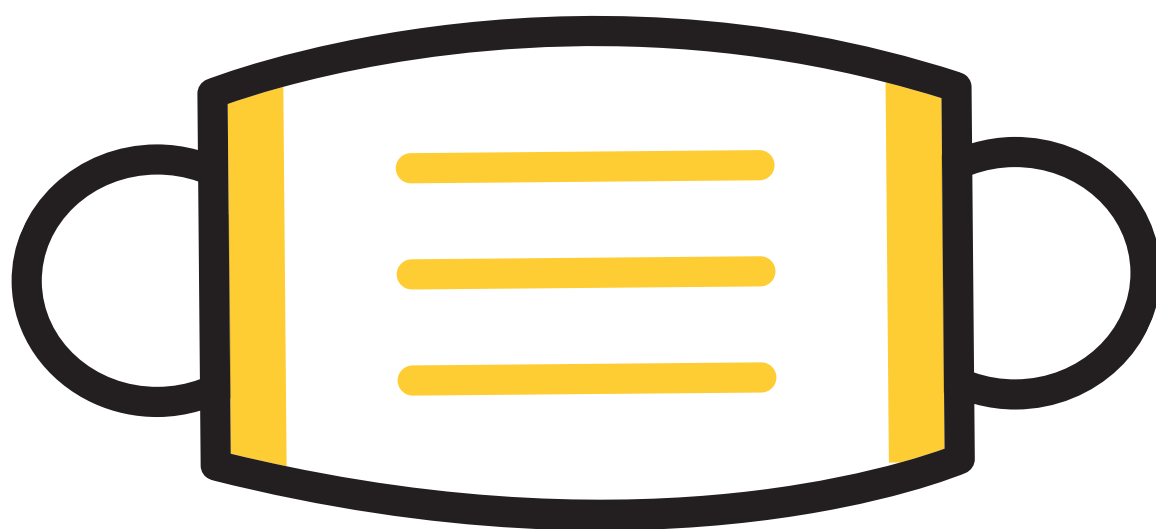


# TIGERS TAKE CARE

Masking with KF94, KN95 or N95 masks is **recommended** throughout campus in all spaces, but not required, regardless of COVID-19 vaccination status.



Masking with KF94, KN95 or N95 masks is **required** for ANYONE who: is experiencing symptoms that could be consistent with COVID-19; tested positive in the last 10 days; or was exposed to COVID-19 in the last 10 days.